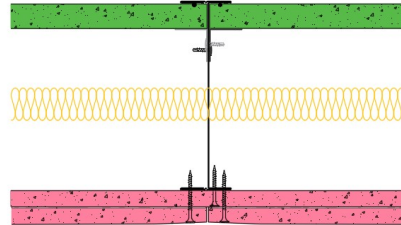


## **SE146-B-61(25) - SPEEDLINE System Data Sheet - Version V1 (24-10-23)**

SPEEDLINE 146mm 'I' Stud Shaft Encasement  
@600mm Ctrs, with 2x BG Gyproc 12.5mm  
FireLine, BG Gyproc 19mm CoreBoard, 25mm APR



### **System Performance Breakdown**

Fire Resistance:

BS476 Part 22:1987:

**90-Int/90-Ins** from Shaft side

**90-Int/60-Ins** from Landing side

See Note 2 below

Test Ref & Date or Applied Ref & Report:

**BRE 302288 - BRE Report P102396-1012A**

Max Height:

**Refer to Speedline Specification Clause**

Thickness:

**173 mm.** (At Base Track, Excluding Finishes)

Duty Grade: BS 5234: Part 2:1992:

**Severe - Annexes A-F**

Sound Insulation:

**50 R<sub>w</sub>dB**, Date Tested or Assessed Against -

<sup>2</sup>Note: When exposed to fire on the landing side, these systems did not satisfy the insulation performance criteria on the framing members. Therefore, when specifying this system, it must be checked with the relevant approval authority, for the building project that this is acceptable, perhaps on the grounds that there will be no combustible material in close proximity, of the framing sections within the shaft. The system **will** satisfy the insulation criteria for 60 minutes if the studs are included.

TESTED AT ONE OF THE UKAS  
ACCREDITED LABORATORIES  
BELOW

B.T.C  
(H-Ref on Graph)



B.R.E



AIRO



S.R.L

